

RECORD OF SURVEY

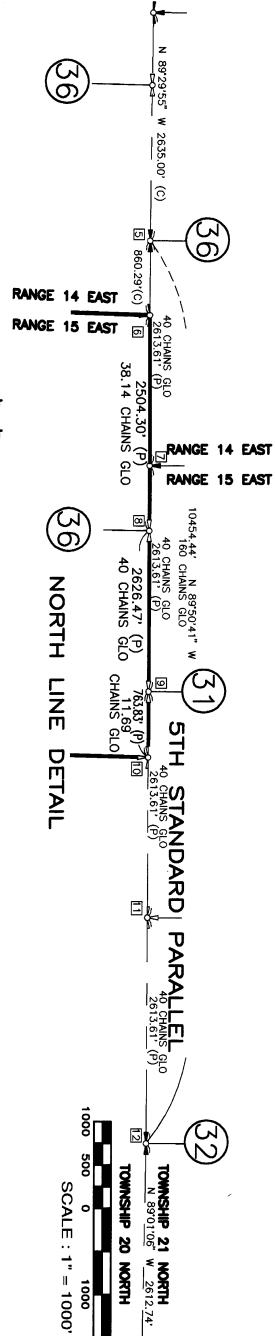
SECTION 6, TWP. 20 N., RGE. 15 E., W.M.

KITITAS COUNTY, WASHINGTON

RONALD RIDGE

2004/12/02/069

30-191



- LEGEND**
- (C) CALCULATED FROM SURVEY BY OTHERS
 - (P) DISTANCE ESTABLISHED BY SINGLE PROPORTION
 - (R) RECORD DISTANCE BY OTHERS
 - (S) EXISTING CONDUITS
 - (W) CORNER NOTE CALL OUT, SEE SHEET 2

DATUM : WASHINGTON STATE PLANE
SOUTH ZONE, NAD 83(91)

ALL DISTANCES SHOWN ON THIS MAP ARE GROUND SCALE. THE DISTANCES SHOWN IN THIS REPORT ARE GROUND DISTANCES. MULTIPLE SET BY GROUND DISTANCE TO OBTAIN GRID DISTANCE. BEARINGS SHOWN ARE GRID BEARINGS. THE CONVERGENCE ANGLE FOR THE PROJECT IS -0718.45".

SURVEY INSTRUMENTATION :
SURVEYING PERFORMED IN CONJUNCTION WITH THIS RECORD OF SURVEY UTILIZED THE FOLLOWING EQUIPMENT AND PROCEDURES:
TOPCON GPS WITH POST PROCESSING
LEICA 1105 TOTAL STATION FOR CONVENTIONAL TRAVERSING
PROCEDURE USED : GPS AND FIELD TRAVERSE WITH ACCURACY METERS ON EXCEEDING THE REQUIREMENTS OF WAC-52-150-090

NOTES:

ALL MONUMENTS SHOWN AS FOUND VISITED BETWEEN JULY AND OCTOBER 2004.
SEE SHEET 2 OF 3 FOR CORNER NOTES AND PROJECT NARRATIVE.
SEE SHEET 3 OF 3 FOR LEGAL DESCRIPTIONS.

SURVEYOR'S CERTIFICATE

THIS MAP CORRECTLY REPRESENTS A SURVEY MADE BY ME OR UNDER MY DIRECTION AND SUPERVISION IN ACCORDANCE WITH THE REQUIREMENTS OF THE SURVEY RECORDING ACT AT THE REQUEST OF AMERICAN FOREST RESOURCES IN OCTOBER 2004.

Rick A. Foxworthy
STATE OF WASHINGTON
L.S. NO. 29278

Rick A. Foxworthy
RICK A. FOXWORTHY
L.S. NO. 35142



RECORDING CERTIFICATE

FILED FOR RECORD THIS 10th DAY OF December, 2004 AT 4:54 PM IN VOLUME 30 OF SURVEYS ON PAGE 187 AT THE REQUEST OF AMERICAN FOREST RESOURCES.

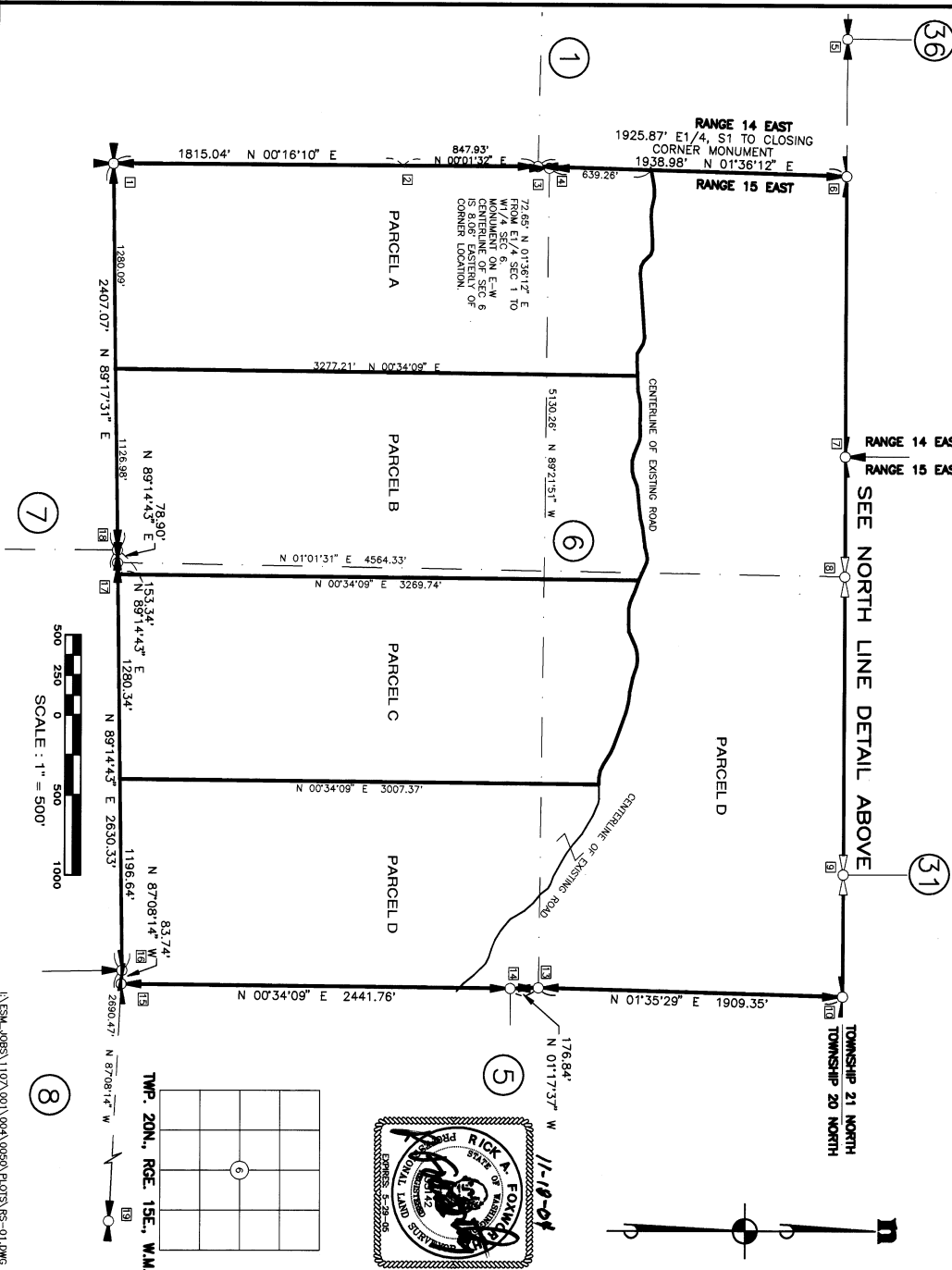
David B. Bacon Supt. of Records
MANAGER

RECORDING NO. 2004/12/02/069

ESM CONSULTING ENGINEERS, L.L.C.
730 S. 348th Street
Federal Way, WA 98003

www.esmciwi.com

Civil Engineering | Land Surveying | Land Planning
Public Works | Project Management | Landscape Architecture
JOB NO. 1107-001-004-0050 DATE: NOVEMBER 18, 2004
DRAWN: B.E.P.V.B.R.S. SHEET 1 OF 3



RECORDING CERTIFICATE

FILED FOR RECORD THIS 10th DAY OF December, 2004 AT 4:54 PM IN VOLUME 30 OF SURVEYS ON PAGE 187 AT THE REQUEST OF AMERICAN FOREST RESOURCES.

David B. Bacon Supt. of Records
MANAGER

RECORDING NO. 2004/12/02/069

ESM CONSULTING ENGINEERS, L.L.C.
730 S. 348th Street
Federal Way, WA 98003

www.esmciwi.com

Civil Engineering | Land Surveying | Land Planning
Public Works | Project Management | Landscape Architecture
JOB NO. 1107-001-004-0050 DATE: NOVEMBER 18, 2004
DRAWN: B.E.P.V.B.R.S. SHEET 1 OF 3

RECORD OF SURVEY

SECTION 6, TWP. 20 N., RGE. 15 E., W.M.

KITTITAS COUNTY, WASHINGTON

RONALD RIDGE

REFERENCE SURVEYS

RECORD OF SURVEY BY WESTERN PACIFIC ENGINEERING, 1993, RECORDING NO. 566465
RECORD OF SURVEY BY WESTERN PACIFIC ENGINEERING, 1993, RECORDING NO. 566465
RECORD OF SURVEY BY CRUSE AND NELSON, 1988, RECORDING NO. 512614
RECORD OF SURVEY BY BELL & UPTON, 1997, RECORDING NO. 199712160014
RECORD OF SURVEY BY EASTSIDE CONSULTANTS, 1998, RECORDING NO. 199806080013
RECORD OF SURVEY BY CRUSE AND NELSON, 1989, RECORDING NO. 504989

SURVEY NOTES

IT IS NOT THE INTENT OF THIS SURVEY TO DETECT THE EASEMENTS, ENCUMBRANCES, OR OTHER INTERESTS THAT AFFECT THIS PROJECT.

CORNER NOTES

- 1] SOUTHWEST CORNER SECTION 6, T 20N, R 15E.
FOUND 5/8" REBAR W/ ORANGE PLASTIC CAP MARKED * KITZ 16915'
PP'S FOUND:
6" PINE WITH 60D NAIL EAST FACE, UP 0.5'
6" PINE WITH ESC TAG, 5.1', SET TO NE CORNER 512, T 20N, R 14E
2] FOUND LINE THREE
ESM PT 333, PG 58
TO SE CORNER*
- 3] EAST QUARTER CORNER SEC 1, T 20N, R 14E.
ESM POINT 323, PG 47
FOUND 3/8" DISK ON 1" GALVANIZED PIPE, UP 0.9' IN ROCK. PILE.
LS 18915, 1995, MONUMENT IS 8.09' EAST OF CORNER POSITION
PP'S FOUND:
27' FIR WITH OLD SCAB SCAR GROWN OVER, NW/4, 23.8'
27' PONDROGA PINE WITH TAG AND OLD SCAB SCAR, 56' COR', 53.4' W, HELD TO CORNER FOR ALIGNMENT OF E-W CENTER OF SECTION LINE
WEST CORNER IS AT INTERSECTION OF E-W LINE WITH EAST LINE OF SECTION 1, T 20N, R 14E.
- 4] SOUTH QUARTER CORNER SEC 26, T 21N, R 14E, STANDARD CORNER
FOUND 3/8" DISK ON 1" GALVANIZED PIPE, UP 0.9' IN ROCK. PILE.
ESM POINT 322, PG 45
NORTHWEST CORNER SEC 6, T 20N, R 15E, CLOSING CORNER
ESM POINT 322, PG 45
STANDARD PARALLEL WITH YELLOW PLASTIC CAP 13.11 FEET SOUTH OF PP'S FOUND:
METAL FENCE POST 0.8' SOUTH OF CORNER
12' FIR WITH ESC TAG WITH SCAR HIGH AND LOW, N46E, 15.65' TO CORNER
12' FIR WITH ESC TAG WITH SCAR HIGH AND LOW, N49E, 14.92' TO CORNER
12' FIR WITH ESC TAG WITH SCAR HIGH AND LOW, S79W, 14.92' TO CORNER
5] SOUTHWEST CORNER SEC 31, T 21N, R 15E, STANDARD CORNER
SEARCHED FOR CORNER, NOTHING FOUND.
CALCULATED POSITION BY SINGLE PROPORTION BETWEEN SOUTH QUARTER OF SECTION 32, T 21N, R 15E.
6] NORTH QUARTER CORNER SEC 6, T 20N, R 15E, CLOSING CORNER
SEARCHED FOR CORNER, NOTHING FOUND.
CALCULATED POSITION BY SINGLE PROPORTION BETWEEN SOUTHWEST CORNER OF SECTION 32, T 21N, R 15E.
7] SOUTH QUARTER CORNER SEC 31, T 21N, R 15E, STANDARD CORNER
SEARCHED FOR CORNER, NOTHING FOUND.
CALCULATED POSITION BY SINGLE PROPORTION BETWEEN SOUTH QUARTER CORNER OF SECTION 36, T 21N, R 14E AND THE SOUTH QUARTER CORNER OF SECTION 32, T 21N, R 15E.
8] NORTHEAST CORNER SEC 6, T 20N, R 15E, CLOSING CORNER
CALCULATED POSITION BY SINGLE PROPORTION.
- 1] SOUTHEAST CORNER SEC 31, T 21N, R 15E, STANDARD CORNER
SEARCHED FOR CORNER, NOTHING FOUND.
CALCULATED POSITION BY SINGLE PROPORTION BETWEEN SOUTH QUARTER CORNER OF SECTION 36, T 21N, R 14E AND THE SOUTH QUARTER CORNER OF SECTION 32, T 21N, R 15E.
2] SOUTH QUARTER CORNER SEC 32, T 21N, R 15E.
FOUND 3/8" DISK ON 1" GALVANIZED PIPE, UP 0.9' IN ROCK. PILE.
MARKED 1/4" 58, EASTSIDE CONSULTANTS, 1998, R 15E, LS 33487
PP'S FOUND:
SCAR SCRIBED 1/4" 58 RP" N46E, 16.6' TO CORNER
6" FIR WITH SCAR SCRIBED 1/4" 58 RP" WITH 60D NAIL IN WEST FACE, S17E, 18.7' TO CORNER
3] WEST QUARTER CORNER SEC 5, T 20N, R 15E.
FOUND 3/8" DISK ON 1" GALVANIZED PIPE
12' SILVER FIR WITH SCAR SCRIBED 1/4" 58" WITH 60D NAIL, 1.5' FROM 10' SILVER FIR WITH SCAR AND SCRIBED 1/4" 58" WITH 60D NAIL, 2.0' FROM BASE N75W, 21.2' TO CORNER
4] SOUTHEAST CORNER SEC 6, T 20N, R 15E.
FOUND 1/2" REBAR WITH ORANGE PLASTIC CAP MARKED *KITZ 16915'
PP'S FOUND:
22' FIR WITH OLD SCARS, SETE, 18.9' TO CORNER
30' PONDROGA PINE WITH SCARS, EAST, 7' TO CORNER
50' PONDROGA PINE WITH SCARS, EAST, 7' TO CORNER
HELD MONUMENT FOR N-S LINE, MONUMENT IS 7.09' SOUTH OF CORNER
5] NORTHEAST CORNER SEC 7, T 20N, R 15E.
FOUND 1/2" REBAR AND RED PLASTIC CAP MARKED *KITZ 16915', 0.1' PROPOSED.
FOUND PP'S:
TWO TAGS, ESC 504 NAIL WEST FACE, N29W, 4.6' TO CORNER, 1997, BOISE CASCADE, N40W, 6' TO OFFSET CORNER, 1993, MEASURES 4.6' TO CORNER BY ESK.
1.6' TO CORNER.
1.6' TO CORNER.
CLO ANGLE BREAK OF 29.2'.
6] SOUTH QUARTER CORNER SEC 6, T 20N, R 15E.
ESM POINT 330, PGS 51 & 53
IS 0.31 NORTH OF CORNER POSITION
PP'S FOUND:
SILVER FIR WITH ESC TAG, S47E, 8.5' TO CORNER, TREE FALLEN OVER.
12' FIR WITH ESC TAG, N77E, 7.3' TO CORNER
12' PONDROGA PINE WITH ESC TAG, N75W, 19.4' TO CORNER
HELD MONUMENT FOR N-S LINE, MONUMENT IS AT INTERSECTION OF N-S LINE WITH NORTH LINE OF SECTION 7, T 20N, R 15E, FOUND MONUMENT ON NORTH LINE OF SECTION 7
7] NORTH QUARTER CORNER SEC 7, T 20N, R 15E.
ESM POINT 331, PGS 59 & 63
FOUND 1/2" REBAR WITH YELLOW PLASTIC CAP MARKED *KITZ 16915'
PP'S FOUND:
ESC TAG, S41W, 14.2' TO CORNER
10' FIR WITH ESC TAG, N49W, 16.2' TO CORNER
10' FIR WITH ESC TAG, N24E, 11.2' TO CORNER
8] NORTH QUARTER CORNER SEC 8, T 20N, R 15E.
FOUND 1/2" REBAR WITH RED PLASTIC CAP MARKED *KITZ 16915'
PP'S FOUND:
10' PINE WITH ESC TAG, S41W, 9.8' TO CORNER
10' PINE WITH ESC TAG, S41W, 9.8' TO CORNER
22' PINE, S77W, 33.6' TO CORNER
S17/4 CORNER SECTION 5 MONUMENT BEARS S89E08'16"E, 41.34' FROM CORNER.

PROJECT NARRATIVE

THIS SURVEY OF SECTION 6, TOWNSHIP 20 NORTH, RANGE 15 EAST WILLAMETTE MERIDIAN WAS COMPLETED TO PREPARE WITH ACCURATE BEARINGS AND DISTANCES CREATED WITHIN SECTION 6.
SECTION 6 IS A FRACTIONAL SECTION AND THE GOVERNMENT LAND OFFICE (GLO) SURVEY FOR THE MATTER SURVEY THAN THE SECTIONS SOUTH AND WEST OF SECTION 6, THE GLO SURVEY FOR SECTION 5 WAS COMPLETED AT THE SAME TIME AS SECTION 6.
THE SECTIONS TO THE SOUTH AND WEST OF SECTION 6 WERE TO BE OPENED AT AN EARLY DATE AND THE GLO SURVEY FOR THE NORTH TIER OF SECTIONS IN THE TOWNSHIP WAS COMPLETED THEREFORE, THE GLO AND WEST OF SECTION 6 ARE SENIOR TO THE OLD CORNERS FOR SECTION 6 AND THE MONUMENTS FOR SECTION 6 WERE THEAD AS LINE POINTS AND THE SECTION 6 WERE THEAD AS LINE POINTS AND THE AND WEST LINE OF THE ADJOINER SECTIONS.
ALONG THE SECTION LINE COMMON TO SECTIONS 5 AND 6, WHERE THE GLO SET QUARTER CORNERS FOR EACH SECTION, THE CORNERS HAD EQUAL WEIGHT AND THEREFOR THE SECTION LINE PASSES THROUGH THEM.
ON THE NORTH LINE OF SECTION 5, THE STANDARD METHOD FOR REESTABLISHING THE STANDARD CORNERS REQUIRING SINGLE PROPORTIONATE MEASUREMENT WAS USED.



ESM CONSULTING ENGINEERS, LLC
720 S. 348th Street
Federal Way, WA 98003
www.esmciwi.com

Soil Engineering | Land Surveying
Public Works | Project Management
Design Services | Land Planning
Sustainable Design | Landscape Architecture

JOB NO. 1107-001-004-0050 | DATE: NOVEMBER 18, 2004
DRAWN: B.E.P.\B.R.S. | SHEET 2 OF 3

200412100019, Vol. 30 Page 198 of 210 pages

